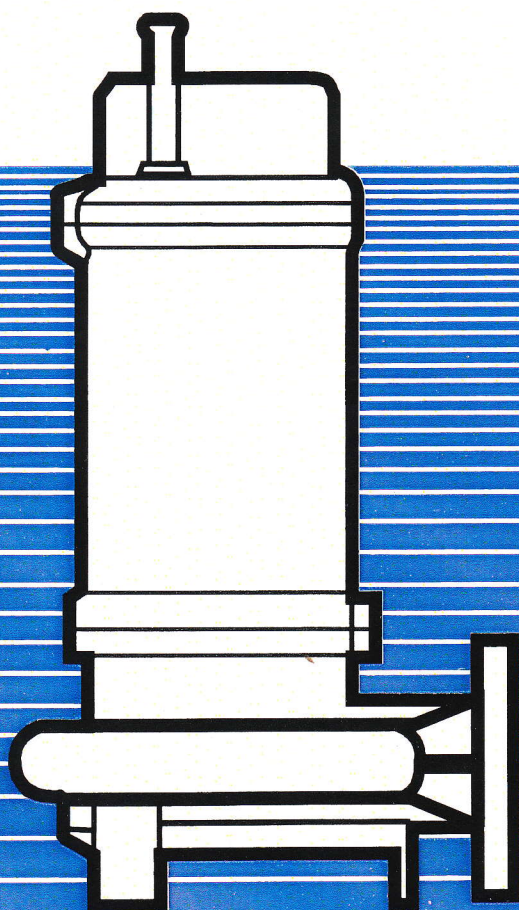




Submersible sludge pump
with disintegrator

GFZP / GFZF

050 - 02



APPLICATION

Pumps are intended for wet pits and **explosion-proof environments**.

Pumps are provided with a disintegrator, which allows pumping water containing scraps up to 50x50 mm size, condoms, napkins, fragmental, short-fibrous and long-fibrous stuffs, as grass, straw, peels of fruit and vegetable, and so on. These solids may reach even 5 percent of volume of a pumped liquid.

Pumps are not intended for pumping liquids containing abrasive solids (sand, etc.), cords, synthetic fibres and textiles, and so on.

Design

Pumps are of single stage centrifugal submersible close-coupled type, with three-phase asynchronous electric motor.

Material options

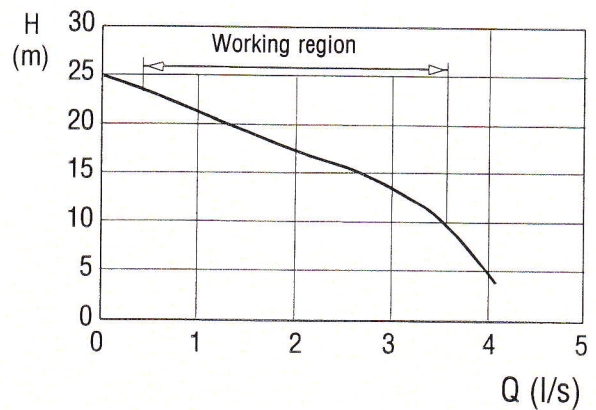
Impeller, suction cover cast chrome steel 42 2906
 Most of stator parts grey cast iron 42 2415
 Disintegrator tool steel 19 733
 Shaft stainless steel 17 022
 Bolts stainless steel

Accessories

Pump is supplied together with a connected supply cable in length of 10 m.

Further, according to the customer wish, a lowering equipment or an elbow with a half coupling for a hose connection may be supplied too.

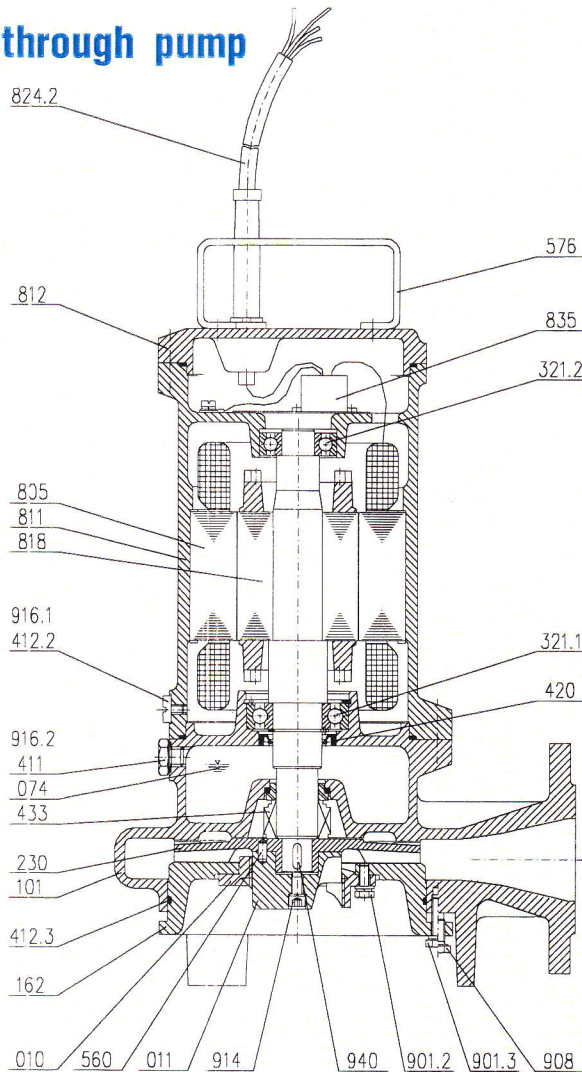
Pump characteristic



PERFORMANCE DATA

Volume flow Q	l.s ⁻¹	0,4 - 3,6
Delivery head H	m	23 - 10
Pump-set power input P _{1max}	kW	2,4
Impeller throughlet	mm	∅ 7
Pump weight	kg	30
Electric motor		single purpose
Speed n	min ⁻¹	2800
Voltage U	V	400
Frequency f	Hz	50
Cut-out current I	A	4,7
Class of insulation		F
Motor covering		IP 68
Max. submersion	m	10
Cable		H07 RN-F4G1,5

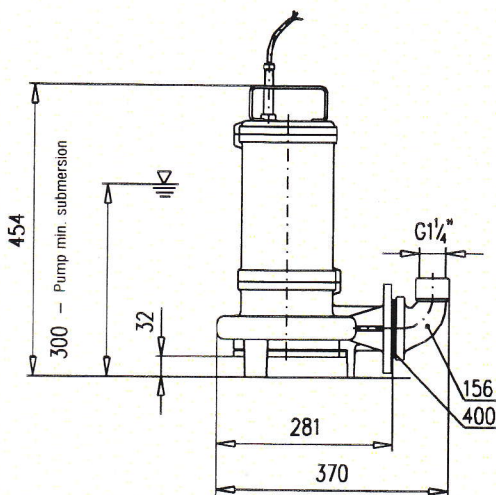
Section through pump



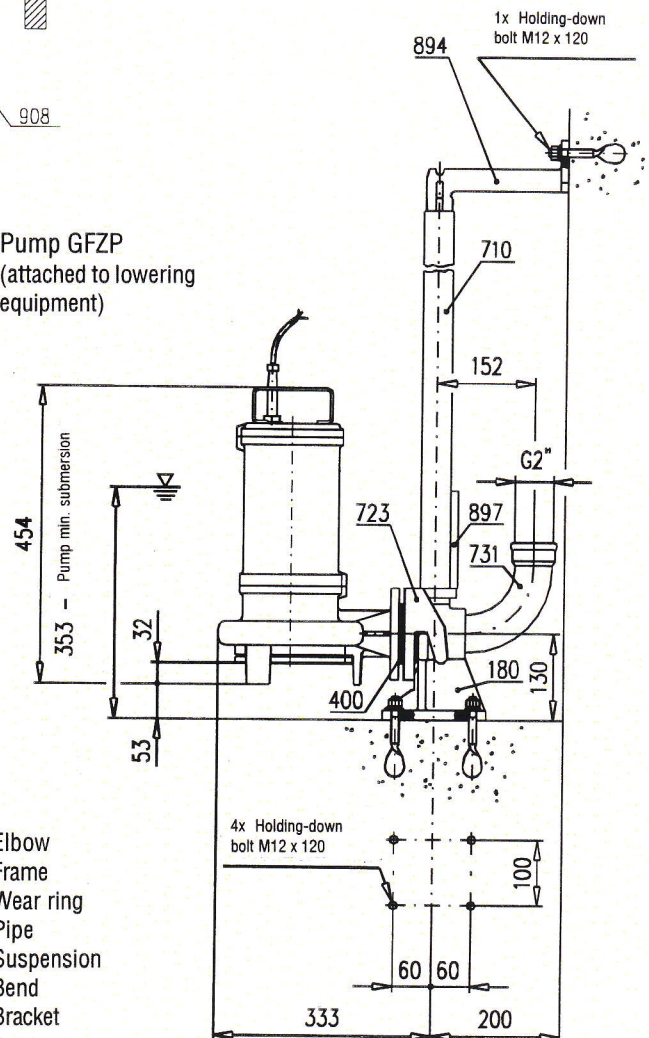
- 010 Cutting disc
- 011 Tool
- 074 Oil
- 101 Pump casing
- 160 Suction cover
- 230 Impeller
- 320.1 Bearing
- 320.2 Bearing
- 411 Wear ring
- 412.2 o-ring
- 412.3 o-ring
- 420 Radial lip seal
- 433 Mechanical seal
- 560 Pin
- 576 Handle
- 805 Electric motor
- 811 Motor casing
- 812 Motor casing cover
- 818 Rotor
- 824.2 Cable
- 833 Terminal board
- 901.2 Bolt
- 901.3 Bolt
- 908 Bolt
- 912 Bolt
- 916.1 Sealing screw
- 916.2 Plug
- 940 Key

Pump dimensions

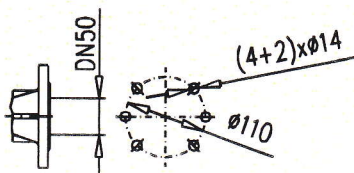
Pump GFZP (standing free at pit bottom)



Pump GFZP (attached to lowering equipment)



Pump discharge branch



- 156 - Elbow
- 180 - Frame
- 400 - Wear ring
- 710 - Pipe
- 723 - Suspension
- 731 - Bend
- 894 - Bracket
- 897 - Guide gib

SIGMA GROUP a.s.
DIVIZE SPOTŘEBNÍ ČERPADLA
J. Sigmunda 79
783 50 Lutín
Czech Republic
Tel.: + 420 68 - 565 1322
Fax: + 420 68 - 565 1300

